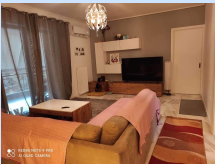


Κουντουριωτου 43, Ηρακλείου, 14122, Αττικής, Greece

HERAKLION (ATTICA - NORTHERN SUBURBS) - Apartment 89sqm on a plot of 1398sqm, 2 bedrooms, 1st, very good condition, construction 1991, renovation 2019, energy class D, a living room, a kitchen, bathroom, autonomous heating (oil), air conditioning , one pilot seat, quiet, airy, bright, panoramic view, painted, storage room, terraces, large terraces, awnings, elevator, garden, aluminum frames, double glazing, marble & wood floor type, separate kitchen, security door, residential allowed access: asphalt, price negotiable, investment, near banks (up to 200m), near metro / electric (up to 200m), near sports facilities (up to 100m), near entertainment (up to 100m), close to Attiki Odos (up to 500m), close to stop bus / trolley (up to 100m), near market (up to 100m), near super market (up to 100m), near square (up to 200m), close to school (up to 100m). Very close to the main square & the ISAP station of Heraklion (5 'on foot) & parallel street of Herakkeio Avenue. Near (5 'by car) & at the Heraklion suburban station & at the junction of Attiki Odos. Right in front of the entrance of the building there is a local bus stop. It is located in the most privileged area of Heraklion as it is center-remote (in the "soul" of the city, but in a quiet location). The apartment is renovated in 2019 with new cabinets in the kitchen & furniture in the bathroom, electrical & plumbing. The floor is marble inside the apartment & on the verandas (front & back) of the house, sanded & cleaned a year ago. The bedrooms have parquet & spacious closets. It has a ready-made solar water heater installation line & a new one-year indoor water heater. It has a storage room + -7sqm & parking space on the floor as well as a large garden around the building with swings & lawn as a small private playground.

BASE INFORMATION:	
Rooms	: 5
Bed	: 2
Bath	: 1
CONVENIENCE:	
General Amenities: Cable Internet,	
Exterior Amenities: Garage,Fruit	
Trees,Exterior Lighting,	



Name

ΠΕΤΡΟΣ